

Solutions

WKHK pg. 35 - 36

1) $y = x - 4$
 $1 = 5 - 4$
 $1 = 1 \checkmark$
 Yes

2) $y = x + 8$
 $0 = 8 + 8$
 $0 \neq 16$
 NO

3) $y = -x - 2$
 $-4 = -2 - 2$
 $-4 = -4 \checkmark$
 Yes

4) $y = -3x$
 $-6 = -3(2)$
 $-6 = -6 \checkmark$
 Yes

5) $y = x + 1$
 $0 = 1 + 1$
 $0 \neq 2$
 NO

6) $y = -x$
 $7 = -(-7)$
 $7 = 7 \checkmark$
 Yes

7) $y = x + \frac{1}{2}$
 $\frac{1}{2} = 1 + \frac{1}{2}$
 $\frac{1}{2} \neq \frac{3}{2}$
 NO

8) $y = x - \frac{2}{5}$
 $-2\frac{2}{5} = -2 - \frac{2}{5}$
 $-2\frac{2}{5} = -2\frac{2}{5} \checkmark$
 Yes

9) $\frac{x}{3} = y$
 $\frac{2}{3} \neq -4$
 NO

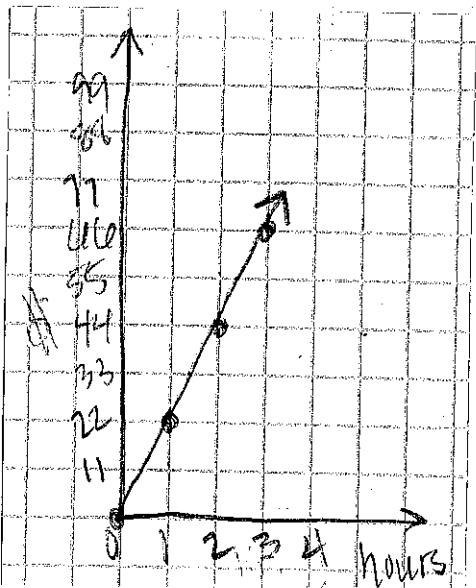
10) \$22/hr

Table \rightarrow

hr	0	1	2	3
\$	0	22	44	66

Eq. $\rightarrow y = 22x$

Graph \rightarrow



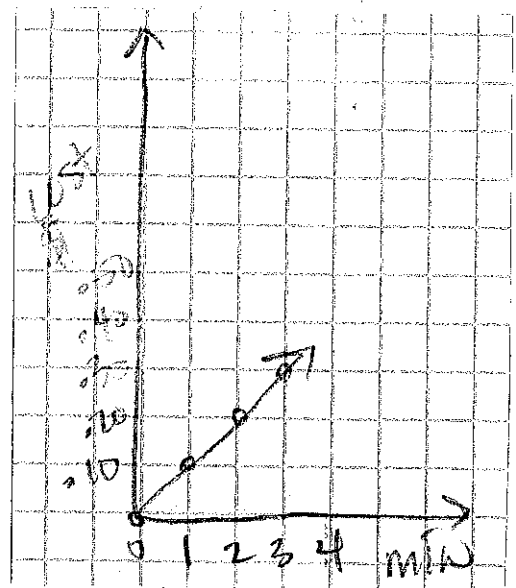
11) \$0.10/min

Table \rightarrow

min	0	1	2	3
\$	0	.10	.20	.30

Eq. $\rightarrow y = .10x$

Graph \rightarrow



* For 12/13 use graph or Equation!

12) $y = 2.25x$
 $y = 2.25(14)$
 $y = 31.5 \text{ ft}$

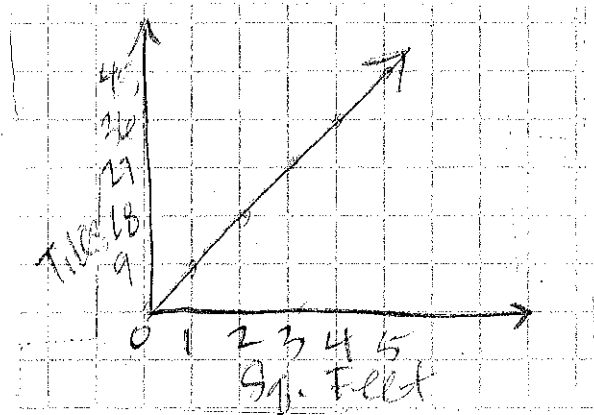
13) $y = 23x$
 $y = 23(12)$
 $y = 276 \text{ pages}$

14) $y = 4.50x$
 $y = 4.50(25)$
 $y = \$112.50$

15) $y = 67x$
 $y = 67(12)$
 $y = 804 \text{ miles}$

16)

Sq. ft	tiles
1	9
2	18
3	27
4	36
5	45



17) $y = 3x - 2$
 $-5 = 3(-1) - 2$
 $-5 = -3 - 2 \checkmark$
 Yes

18) $y = -5x + 7$
 $-2 = -5(1) + 7$
 $-2 \neq -5 + 7$
 No

19) $y = -4x - 3$
 $1 = -4(1) - 3$
 $1 \neq -4 - 3$
 No

20) $y = 13 + 6x$
 $7 = 13 + 6(-1)$
 $7 = 13 - 6 \checkmark$
 Yes

21) $-\frac{2}{3}x - 5 = y$
 $-\frac{2}{3}(3) - 5 = -11$
 $-6 - 5 = -11 \checkmark$
 Yes

22) $y = 10 - \frac{x}{2}$
 $\frac{19}{2} = 10 - \frac{9}{2}$
 $7.5 = 7.5 \checkmark$
 Yes

23) Inductive reasoning is getting to an answer using a pattern or relationship. Can be used to help us predict.

SOLUTIONS

Wk 12 pg. 37

1) $3x - 2y$
 $3(-3) - 2(-5)$
 $-9 + 10 = 1$ (C)

2) $y = 6x - 1$
F $\rightarrow -17 = 6(-3) - 1$ G $\rightarrow 7 = 6(1) - 1$
 $-17 = -18 - 1$ $7 = 6 - 1$
NO NO
H $\rightarrow 7 = 6(1) - 1$ (I) $17 = 6(3) - 1$
 $7 = 6 - 1$ $17 = 18 - 1$
NO YES

3) $-x = y$
A $\rightarrow -(-1) = -1$ (B) $\rightarrow -1 = -1$
 $1 = -1$ YES
NO
C $\rightarrow -1 = 1$ D $\rightarrow -(-1) = -2$
NO $1 = -2$
NO

4) Hours \uparrow by 10 and $\$$ \uparrow by 85; $\frac{85}{10} = 8.5$
 $y = 8.5x$ (F)

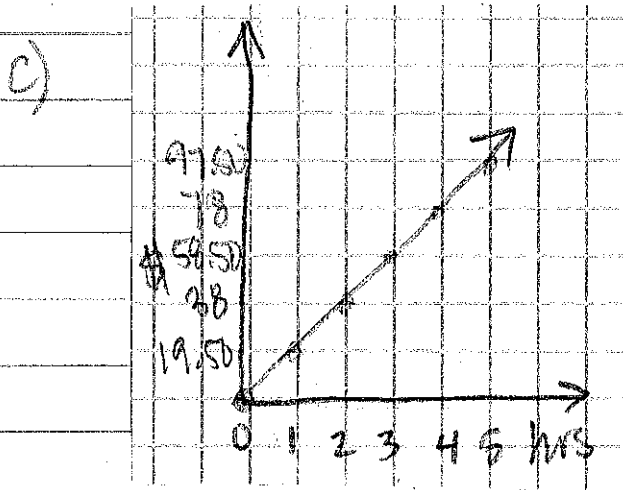
5) $S = R - 3$ (D)

\rightarrow

a)

hr	0	1	2	3	4	5
#	0	19.50	39	58.50	78	97.50

b) $y = 19.50x$



d) $y = 19.50(40)$
 $y = \$780$